



## InstMC Hertfordshire Section

Wednesday 26<sup>th</sup> April 2017

7:00 p.m. (refreshments from 6:45 p.m.)

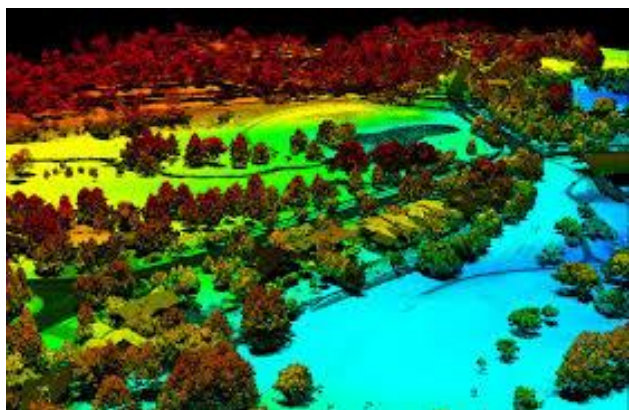
Eaton Electric Ltd, Great Marlings,  
Butterfield, Luton LU2 8DL.

(See map below)



### LIDAR – The new illuminating the past

Andy McGrandle



The UK topography which has traditionally been defined by teams of Ordnance Survey surveyors is now defined in great detail by a countrywide program of LIDAR laser scanning.

This talk shows how this new data is acquired and what it can show us with reference to a small village in north Buckinghamshire where this modern high-resolution data is being used to illuminate long forgotten features seen on maps of the area from the late 1700's. The LIDAR data has been commercially available for several years and was very expensive, but since December 2015 it has been on open release for anyone to download.

We do hope you can join us for this very interesting talk.

The talk will be preceded by a short InstMC (Herts) AGM.

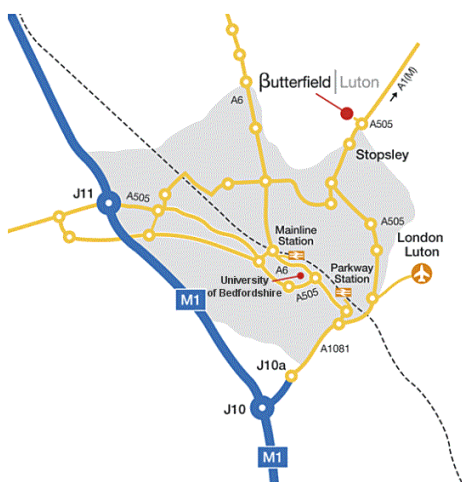
The presentation will be followed by an opportunity for informal discussion and conversation over a buffet supper.

A donation of £2 per person is requested as a contribution to costs.

**Members, non-members and guests are most welcome.**

For local section details, visit our web site at:  
<http://www.instmc.org/technical-events-programme>

Twitter  <https://www.twitter.com/instmcherts>



Butterfield Business Park is situated at the Luton end of the A505 running between Hitchin and Luton.

Exit the A505 by the roundabout between Putteridgebury College and the Vale Crematorium (at the Hilton Garden Inn hotel).

Driving into the business park, proceed straight across the roundabout in 200 metres.

The road bends to the left. At the bend, take the fork on the right hand side, turn left and left again into the car park. Reception is at the left hand side of the building.